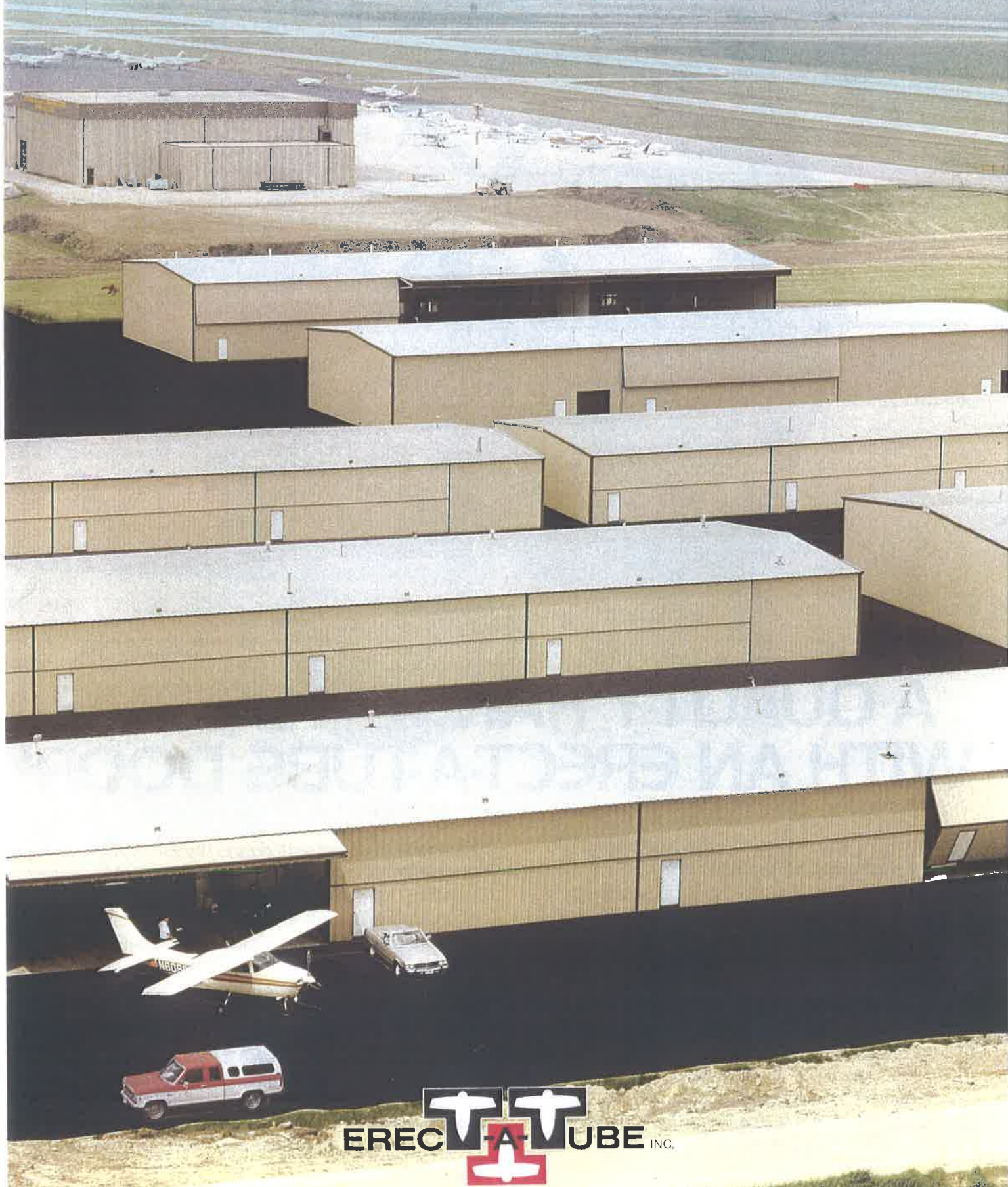
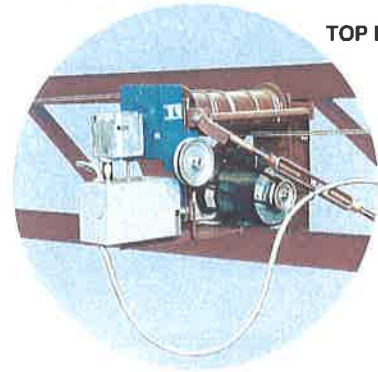


WE'VE EARNED OUR WINGS IN AIRCRAFT HANGARS



TOP MOUNT OPERATOR



STRUCTURAL
WEBBED
TRUSS

LIFT CABLES

I-BEAM
DOOR
COLUMN

CAM LOCK

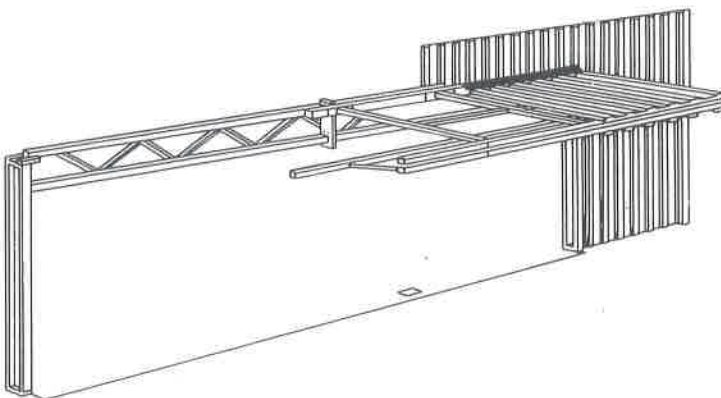
SADDLE BLOCKS

FLOOR SOCKET



A QUALITY HANGAR BEGINS WITH AN ERECT-A-TUBE DOOR!

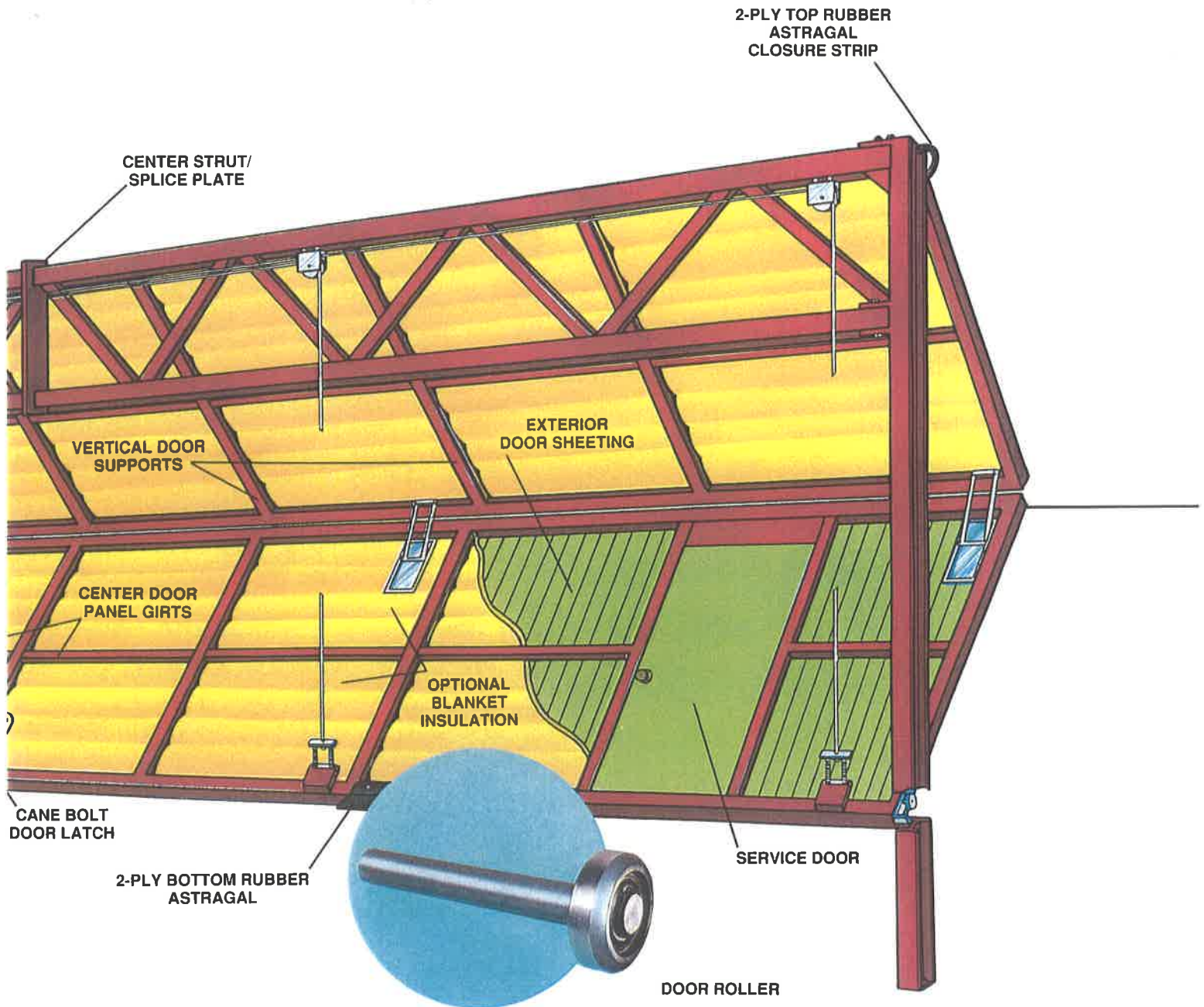
SELF-SUPPORTING
DOOR SYSTEM



One example of the *right door* is the leader of Erect•A•Tube door system line... the Bi-Fold Door System. Perhaps the smoothest operating door system on the market, the Bi-Fold System is fully electric and controlled with push-button ease. A simple 24 volt up-down-off switch is conveniently located inside each structure and allows for open and close with a single push of the button.

But Erect•A•Tube Bi-Fold door systems aren't better by chance. **They work better because they're designed better**, to operate easier, smoother and safer than other folding door systems on the market.

The most obvious difference that sets an



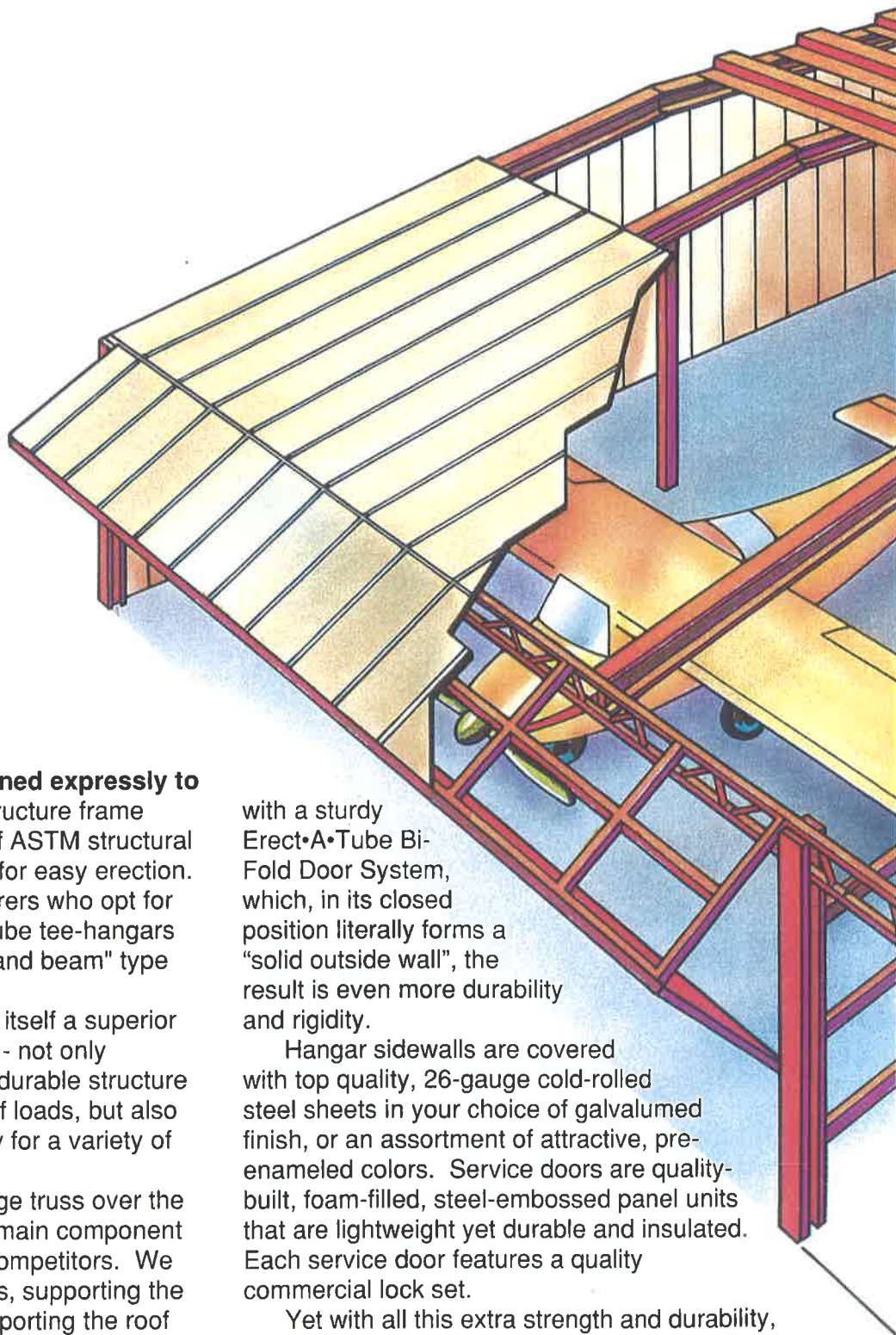
Erect•A•Tube Bi-Fold door above the rest, is its drive system. Unlike most doors on the market, which operate via a sprocket/chain drive operator, Erect•A•Tube Bi-Folds open via a direct-drive system driven by an electrical motor. In place of a standard sprocket/chain drive, Erect•A•Tube has employed a special direct-drive “worm gear” gear box, which turns a shaft to wind and unwind the operating cables more smoothly.

On Bi-Fold doors 50 feet wide or less, this exclusive direct-drive system accomplishes a faster, more fluid open-close. On systems larger than 50 feet wide, Erect•A•Tube reverts to the more familiar sprocket/chain drive.

However, they utilize a unique *dual chain drive assembly* which actually **doubles the safety and strength of the action**.

Erect•A•Tube doors roll more smoothly, too. Only Erect•A•Tube uses sealed and lubricated ball bearing rollers which move freely along the welded steel track. Rubber astragals are added to the top and bottom of door for greater weather protection. Finally, Erect•A•Tube Bi-Fold systems also outshine the competition when it comes to safety features. An automatic shutoff kicks in at the fully open or closed position. An electric brake will prevent the door from free wheeling. In case of power failure... manual lifting is allowed.

UNMATCHED VERSATILITY TO M



General Construction

Each Erect•A•Tube hangar is **designed expressly to provide dependable, long life.** Structure frame members are precision-fabricated of ASTM structural steel for strength and prefabricated for easy erection. And, unlike most hangar manufacturers who opt for "cantilever construction", Erect•A•Tube tee-hangars with electric bi-fold doors are "post and beam" type construction.

Post and beam has long proven itself a superior construction design for tee-hangars - not only because it creates a stronger more durable structure with a more equal distribution of roof loads, but also because it offers maximum flexibility for a variety of models.

We employ a steel-webbed bridge truss over the door opening on our hangar as the main component that separates Erect•A•Tube from competitors. We advocate bridging the door openings, supporting the door and attaching the roof, not supporting the roof and attaching the door. After all, that's what a Tee-Hangar is... a series of doors with a roof over it. This exclusive feature accommodates the major load of the whole hangar and door systems, and provides the mounting for the door operator, sheaves and other pertinent appurtenances necessary for smooth, safe, and continuous door operation. And, when equipped

with a sturdy Erect•A•Tube Bi-Fold Door System, which, in its closed position literally forms a "solid outside wall", the result is even more durability and rigidity.

Hangar sidewalls are covered with top quality, 26-gauge cold-rolled steel sheets in your choice of galvalumed finish, or an assortment of attractive, pre-enameled colors. Service doors are quality-built, foam-filled, steel-embossed panel units that are lightweight yet durable and insulated. Each service door features a quality commercial lock set.

Yet with all this extra strength and durability, Erect•A•Tube tee-hangars are still designed for easy, on-site erection. Secondary members are prepunched and all structural components have factory-welded clips. And there's no need for field locating of hinges, sheaves, etc. Everything is attached in the shop on precision jigs by certified personnel. Erect•A•Tube furnishes detailed erection

MEET EVERY BUILDING PROGRAM!



United States and Canada. Today, our goal remains steadfast as we constantly strive to keep on top of the very latest materials, designs, and industry needs to provide users with exactly the kind of aircraft shelter they need at a price they can afford to pay.

More often than not, our "nested" or standard tee-hangars, or our rectangular clear span hangars are the answer. Erect•A•Tube tee-hangars save both space and money by providing flexibility to better utilize hangar space, thereby providing exactly the type of quality, secure structures so important to today's aircraft owners.

Further savings come from lower maintenance costs. Durable, prepainted metal surfaces need little attention for years to come.

Whether you need multiple units for a busy, commercial operation, or a single unit for your personal use, you can count on modern, Erect•A•Tube "nested" tee-hangars, standard tee-hangars, and rectangular clear span hangars to give you the dependable, year-round housing you want at a price you can afford.

It makes good sense to deal with the tried and true experience that comes from being the oldest prefabricated hangar manufacturer in the business today... Erect•A•Tube, Incorporated.

drawings and expert consultation to assure quick and precise installation of the tee-hangar by either factory-trained crews or by your own workmen.

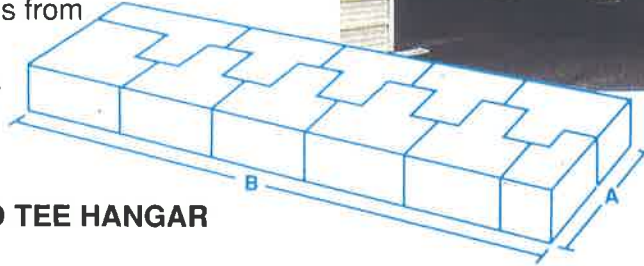
As the "air mobile" society continues to grow, airport managers and fixed base operators must utilize all available or potential hangar space, or suffer the consequences of lost revenue. However, they won't accept just any kind of "shelter". They demand quality structures at affordable prices to provide optimum protection for their expensive aircraft.

At Erect•A•Tube, Inc., we've built our reputation engineering and fabricating premium hangars that meet these demands. In the early days, we set industry standards for aircraft hangar construction and excellence. A thirty-year commitment to the Aviation Industry has resulted in hangar installations, hangar doors and door systems in operation all over the

BASIC HANGAR CONFIGURATION

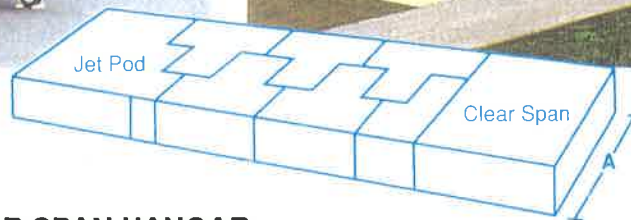
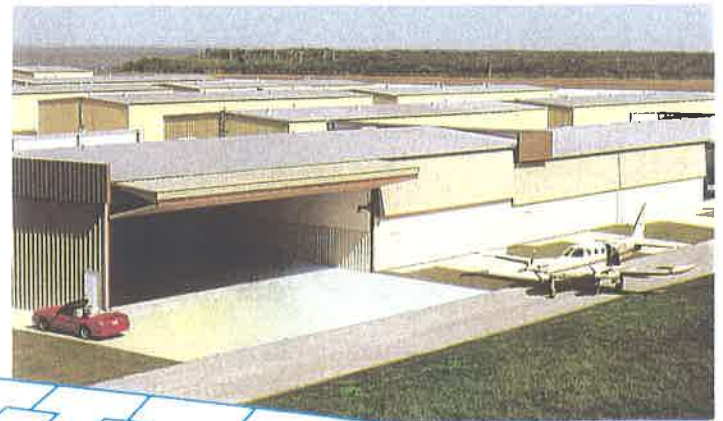
Design Flexibility

The extreme versatility of the Erect-A•Tube nested tee-hangar design allows you to combine small and large hangars to meet individual storage requirements. It permits you to include jet pods or clear span modifications that give you a prime opportunity to house that special airplane with a custom hangar, at a very reasonable cost. Tee-hangar groups, like the ones shown on these two pages, offer the extra security and privacy that comes from "compartmentalization" over storage in large open hangars.



NESTED TEE HANGAR

Model Number	Width "A"	Overall Length "B"					Individual Unit Dimension			
		2 Unit	4 Unit	6 Unit	8 Unit	10 Unit	Clear Door	Depth	Wing Depth	Tail Width
N51-42	51'0"	63'0"	105'0"	147'0"	189'0"	231'0"	41'6" x 12'0"	33'0"	18'0"	21'0"
N54-42	54'0"	63'0"	105'0"	147'0"	189'0"	231'0"	41'6" x 12'0"	33'0"	21'0"	21'0"
N60-45	60'0"	67'6"	112'6"	157'6"	202'6"	247'6"	44'6" x 14'0"	39'0"	21'0"	22'6"
N60-48	60'0"	72'0"	120'0"	168'0"	216'0"	264'0"	47'6" x 14'0"	39'0"	21'0"	24'0"
N72-60	72'0"	90'0"	150'0"	210'0"	270'0"	330'0"	59'6" x 18'0"	48'0"	24'0"	30'0"



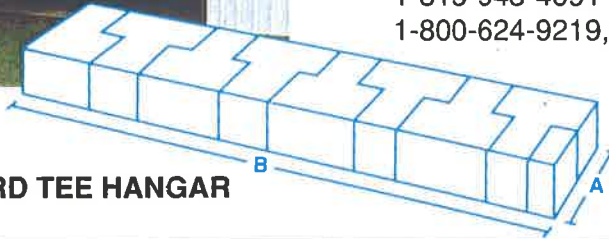
JET POD/CLEAR SPAN HANGAR

Model Number	Bldg. Width "A"	Unit Depth	Wing Depth	Jet Pod/Clear Span Door Size	Tee Hangar Door Size
N51-42	51'0"	33'0"	18'0"	44'6" x 12'0"	41'6" x 12'0"
N54-42	54'0"	33'0"	21'0"	44'6" x 12'0"	41'6" x 12'0"
N60-45	60'0"	39'0"	21'0"	47'6" x 14'0"	44'6" x 14'0"
N72-60	72'0"	48'0"	24'0"	64'6" x 18'0"	59'6" x 18'0"

IS ALLOW BUILT-IN FLEXIBILITY!



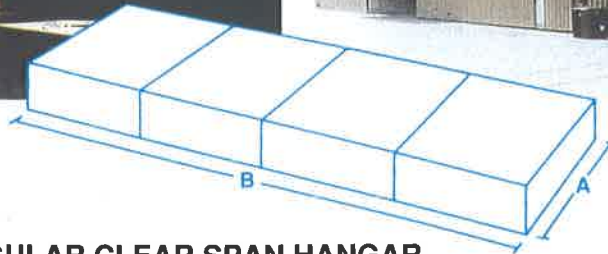
Hangar design is truly controlled by your particular circumstance. There are literally dozens of possible configurations available to you. Call an Erect-A-Tube design expert today. Let us help you determine the right sized, economical, dependable tee-hangar layout for your operation. Put our experience and versatility to work on your project. Write **Erect-A-Tube, Inc.**, P.O. Box 100, Harvard, IL 60033-0100, or call 1-815-943-4091 or (Outside Illinois) Toll Free 1-800-624-9219, Fax 1-815-943-4095.



STANDARD TEE HANGAR

Model Number	Width "A"	Overall Length "B"					Individual Unit Dimension			
		2 Unit	4 Unit	6 Unit	8 Unit	10 Unit	Clear Door	Depth	Wing Depth	Tail Width
S36-42	36'0"	73'6"	136'6"	199'6"	262'6"	325'6"	41'6" x 12'0"	36'0"	18'0"	21'0"
ST36-42*	36'0"	73'6"	136'6"	199'6"	262'6"	325'6"	41'6" x 12'0"	36'0"	18'0"	21'0"
S42-45	42'0"	78'9"	146'3"	213'9"	281'3"	348'9"	44'6" x 14'0"	42'0"	21'0"	22'6"
ST42-45*	42'0"	78'9"	146'3"	213'9"	281'3"	348'9"	44'6" x 14'0"	42'0"	21'0"	22'6"
S42-48	42'0"	84'0"	156'0"	228'0"	300'0"	372'0"	47'6" x 14'0"	42'0"	21'0"	24'0"
S48-60	48'0"	105'0"	195'0"	285'0"	375'0"	465'0"	59'6" x 18'0"	48'0"	24'0"	30'0"

*Sliding door



RECTANGULAR CLEAR SPAN HANGAR

Model Number	Width "A"	Overall Length "B"					Individual Dimension	
		1 Unit	2 Unit	3 Unit	4 Unit	5 Unit	Clear Door	Depth
R33-42	33'0"	42'0"	84'0"	126'0"	168'0"	210'0"	41'6" x 12'	33'0"
R41-45	41'0"	45'0"	90'0"	135'0"	180'0"	225'0"	44'6" x 14'	41'0"
R41-48	41'0"	48'0"	96'0"	144'0"	192'0"	240'0"	47'6" x 14'	41'0"
R52-56	52'0"	56'0"	112'0"	168'0"	224'0"	280'0"	55'6" x 16'	52'0"
R62-56	62'0"	56'0"	112'0"	168'0"	224'0"	280'0"	55'6" x 18'	62'0"
R62-65	62'0"	65'0"	130'0"	195'0"	260'0"	325'0"	64'6" x 18'	62'0"

6 UNIT -
288 FT
97,000



AND WHEN YOU NEED MORE... OUR HANGARS ARE STILL THE ANSWER!



East Troy, WI

THE INDIVIDUAL ANSWER

- corporate or personal hangars
- simple construction
- standard sizes available



Belvidere, IL

THE COMMUNITY ANSWER

- club, corporate or personal hangars
 - design flexibility
- custom or standard sizes available



Mesquite, TX

THE DEVELOPMENT ANSWER

- public or private hangars
- multiple unit T-hangars
- planning and engineering services available

**WE ARE THE EXPERTS...
AND HAVE BEEN SINCE 1963!**



P.O. Box 100, Harvard, Illinois 60033-0100

Form No. 1479/1-97

Phone (815) 943-4091 Outside Illinois (800) 624-9219 • Fax (815) 943-4095

Printed in U.S.A.