



RAISED
LANDSCAPE MOUND

RAISED
LANDSCAPE MOUND

RAISED
LANDSCAPE MOUND

RAISED
LANDSCAPE MOUND

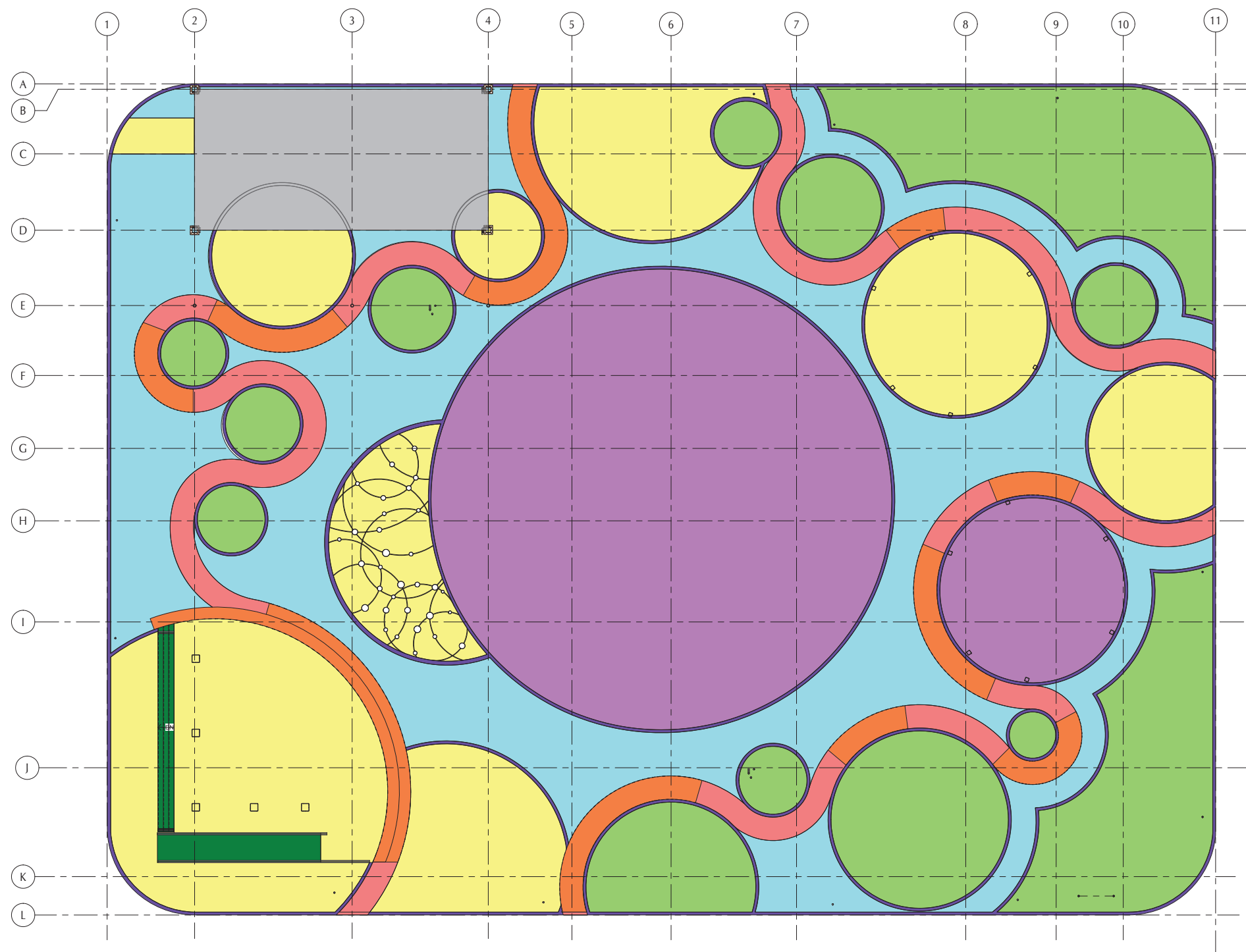


MARCH 26th, 2019

THE COURTYARD | MONTGOMERY PROMENADE



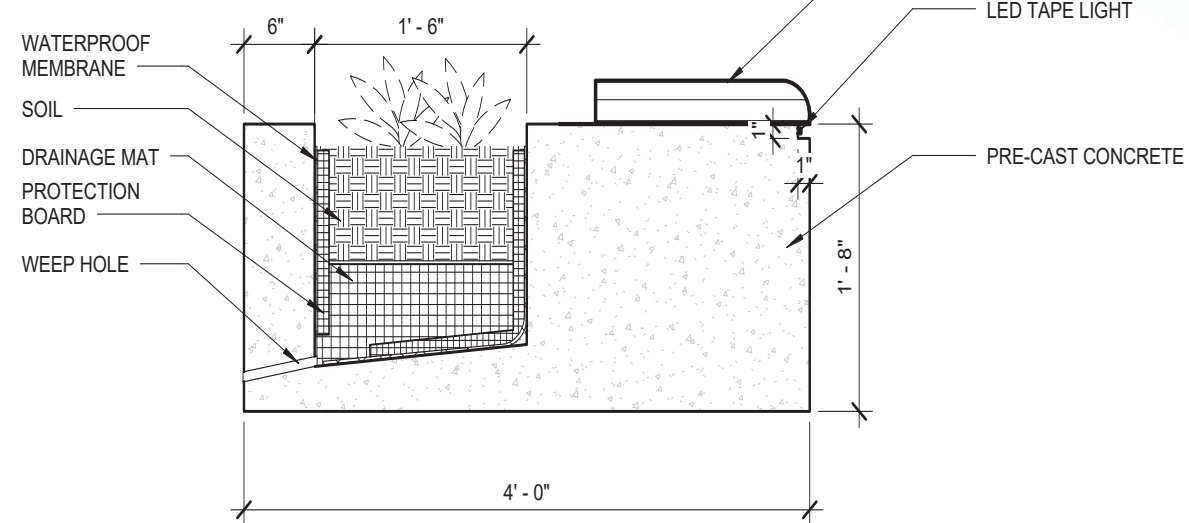
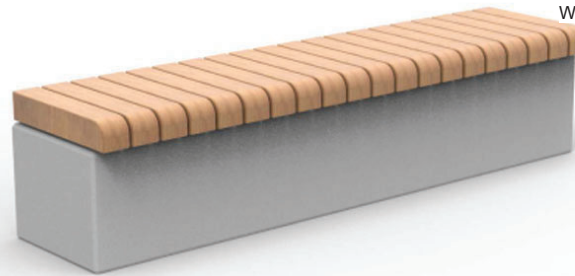
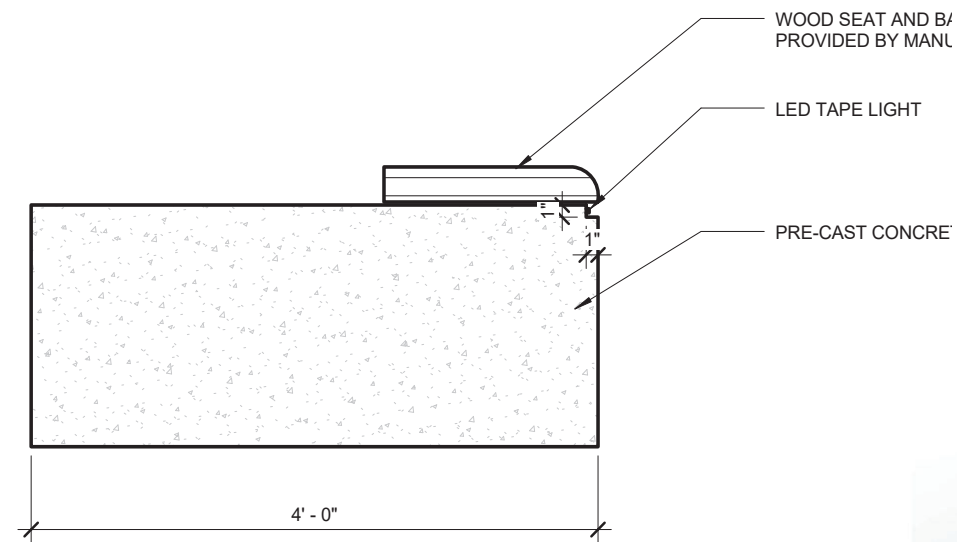
- 1 Site Plan Textures
- 2 Bench/ Planter Details
- 3 Trellis Details
- 4 Seasonal Rink Details
- 5 Fountain Details
- 6 Stage Details
- 7 Building
- 8 Bollards
- 9 Radii | Geometry



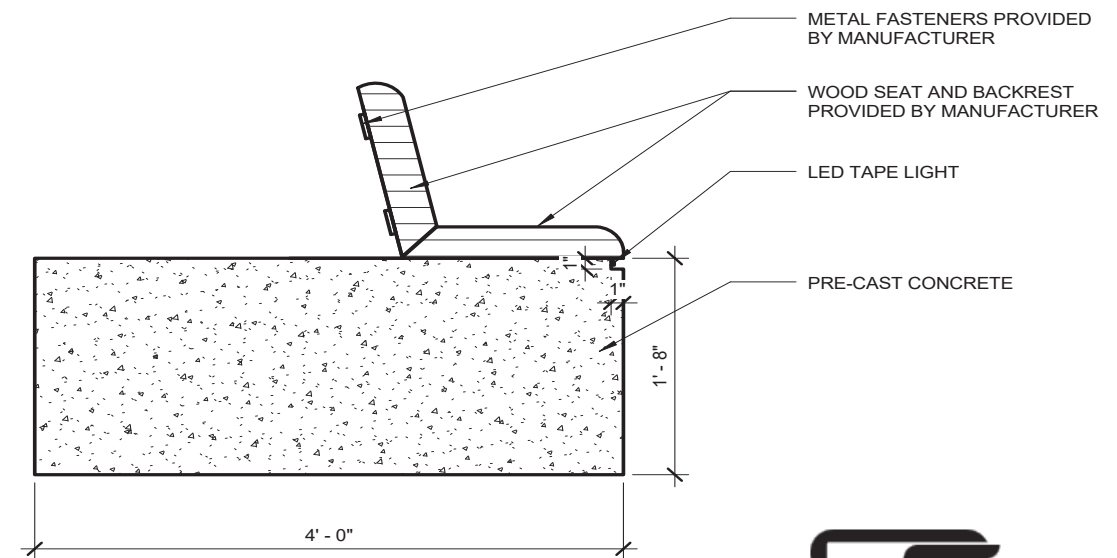
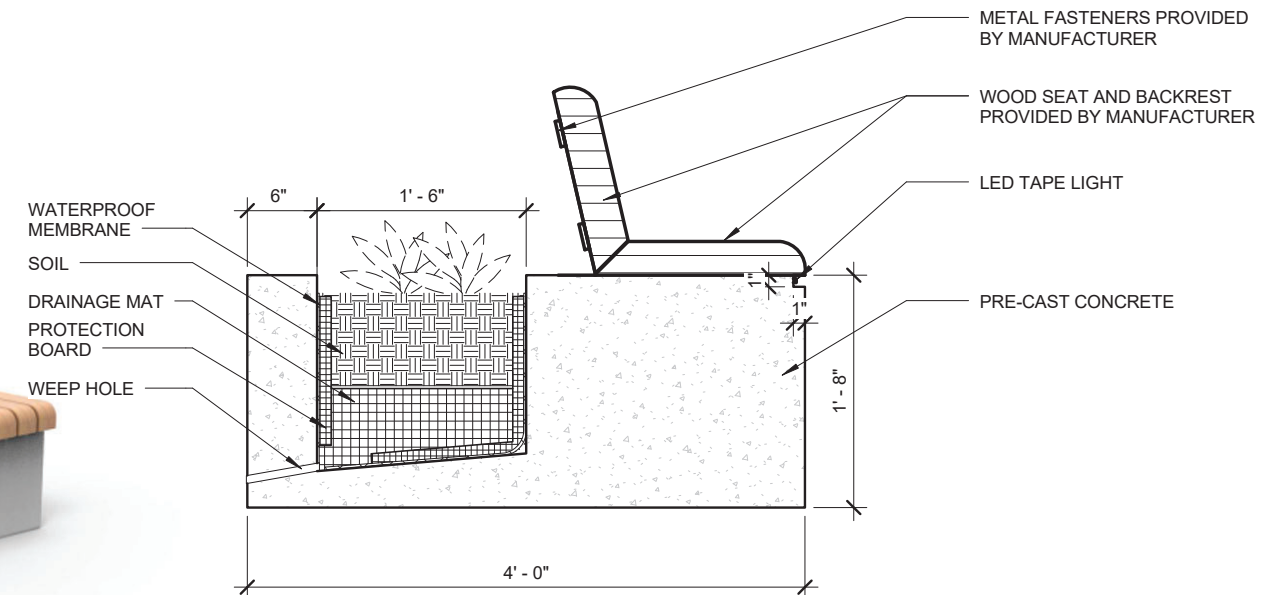
- Pavingstones with ArmorTec® on Sandstone Blend | by Cambridge
- Pavingstones with ArmorTec® on Toffee/ Onyx lite | by Cambridge
- Warm white colored concrete path with LED strip light in aluminium frosted diffuser (See detail 6)
- Bench | Planter in Warm white colored concrete (See Detail 2)



- Sand colored concrete
- Vertical transportation in Sand colored concrete
- Grass
- Artificial Grass



Section of backless bench / planter



Section of bench / planter

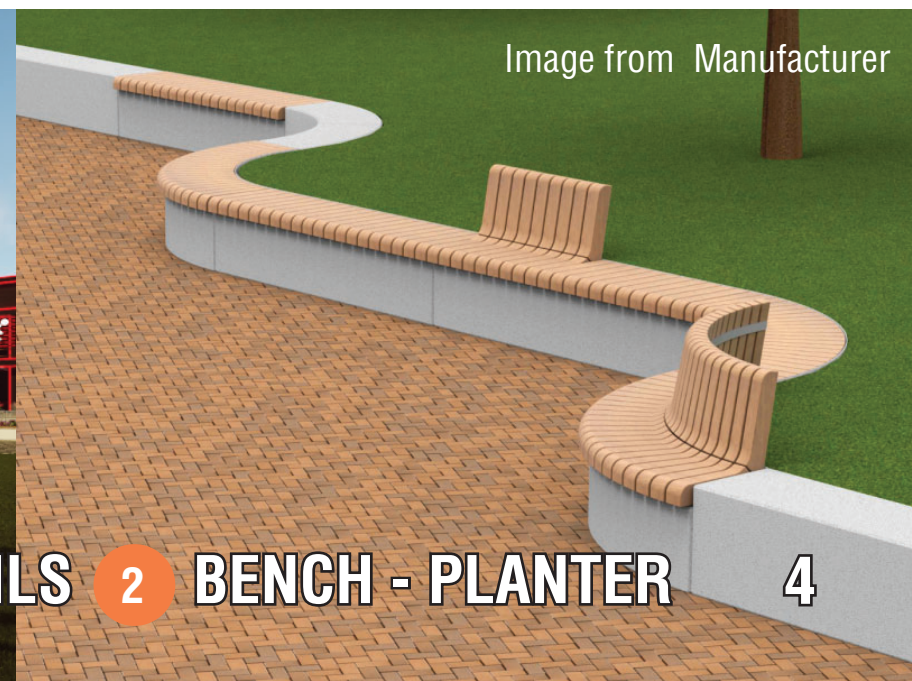
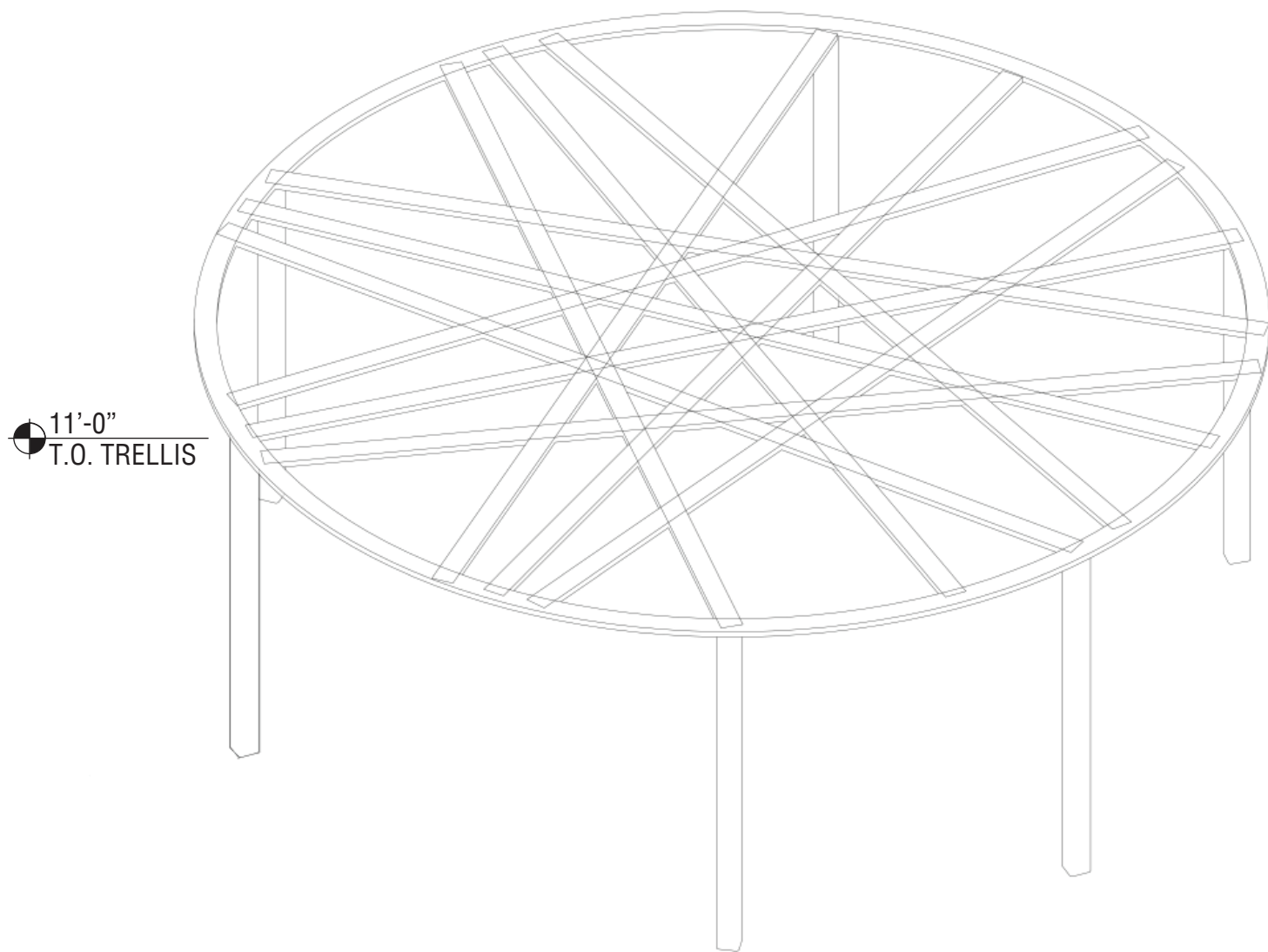
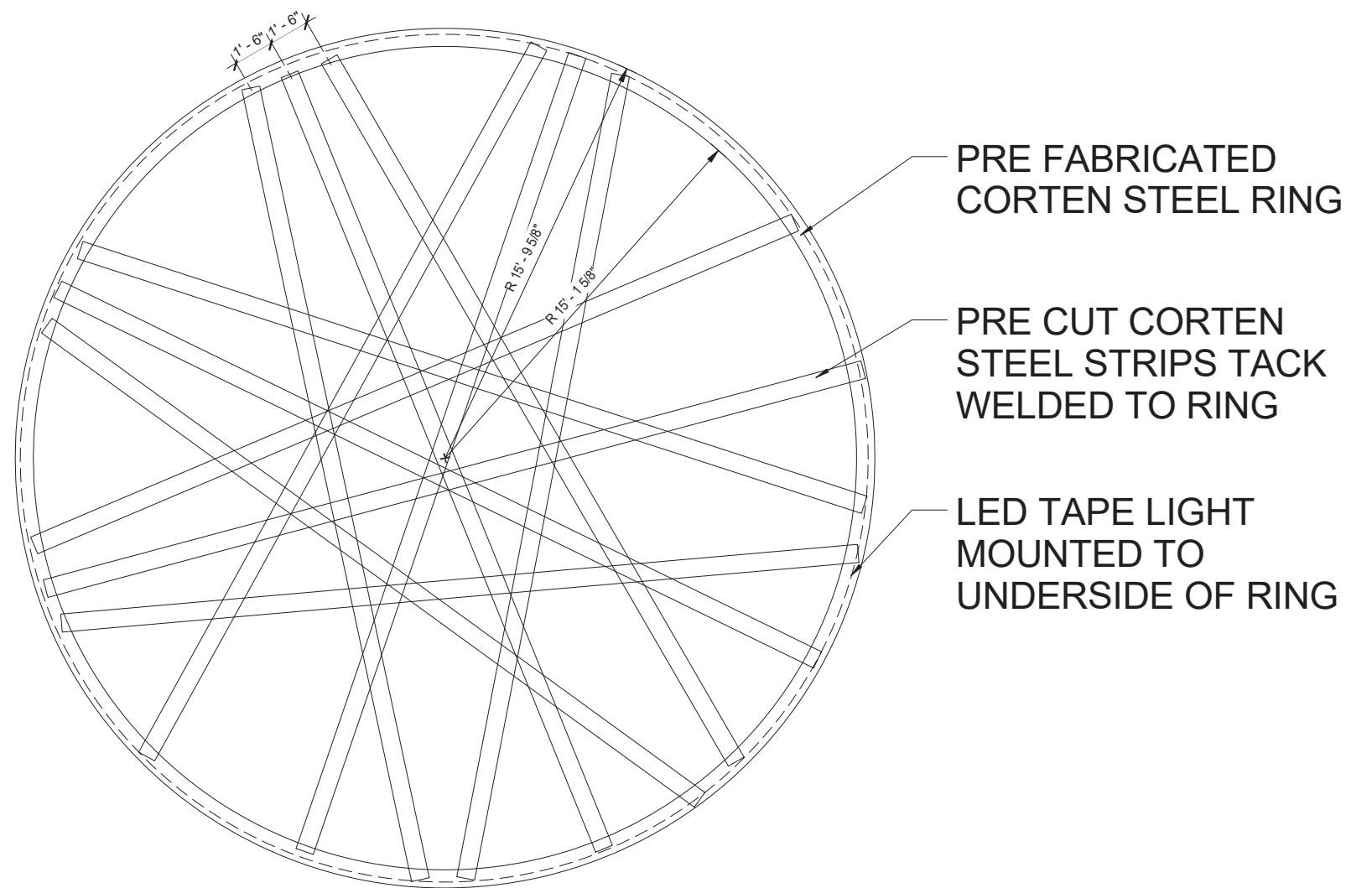


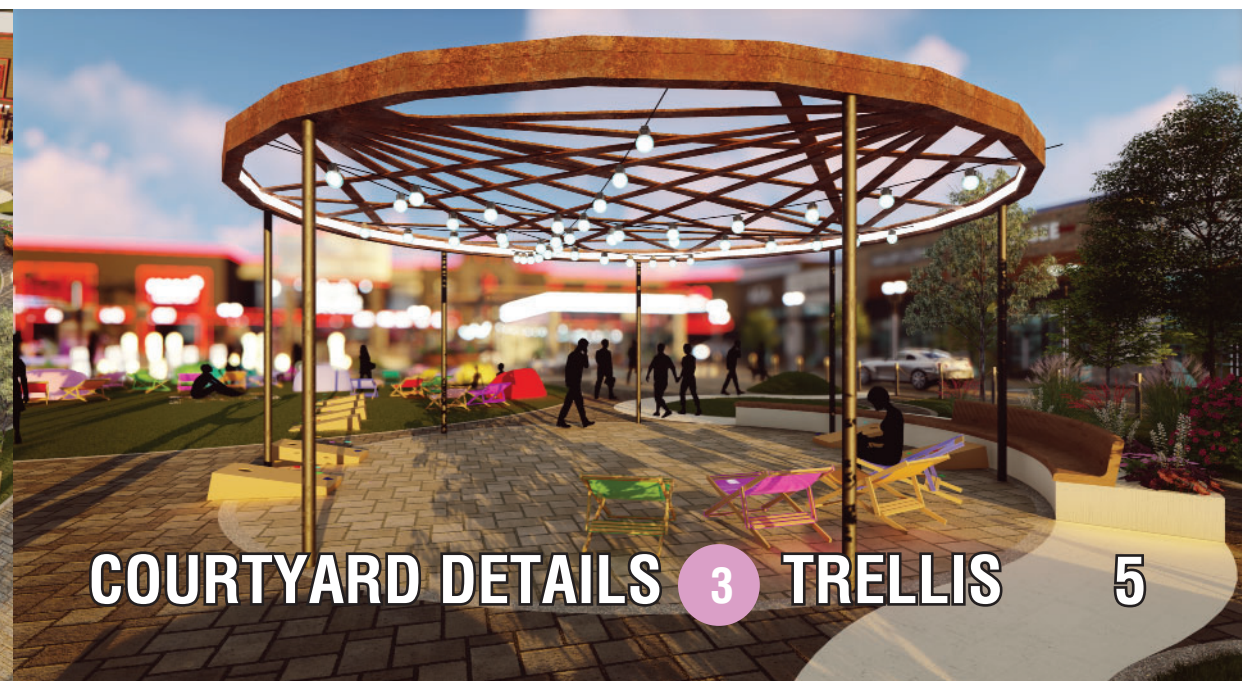
Image from Manufacturer

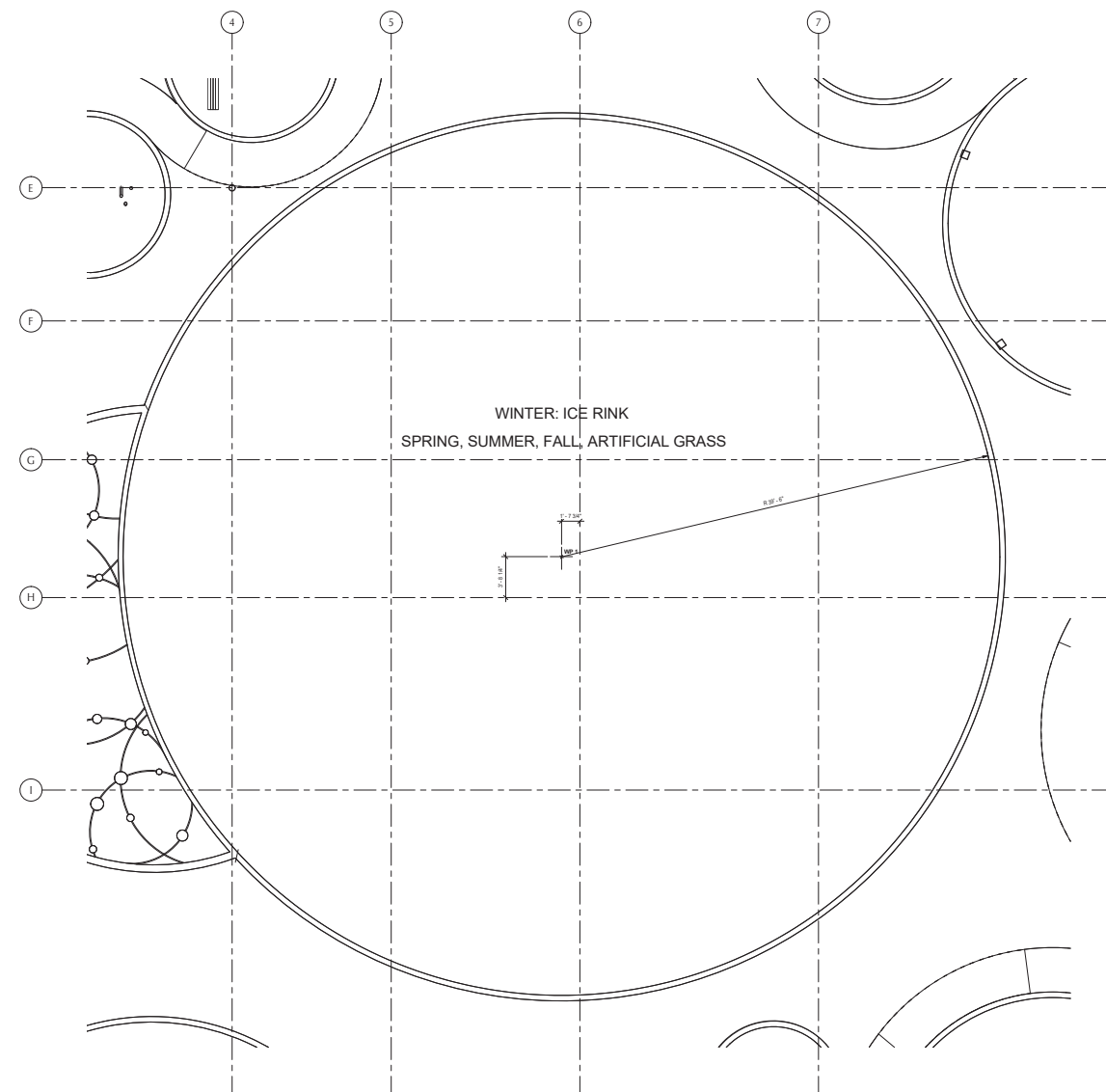


Trellis Axon

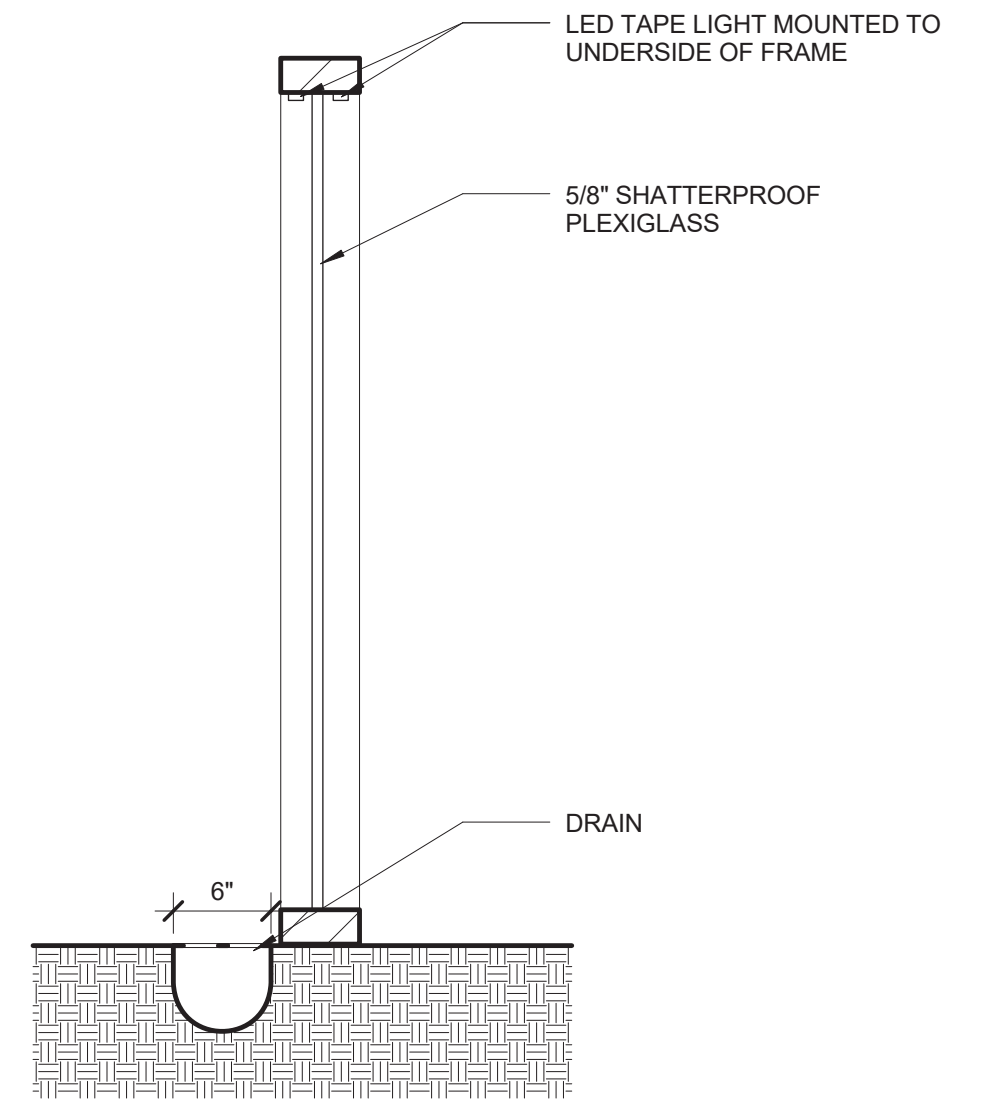


Trellis Plan





Seasonal Rink Boards Section



Buttercup spray nozzle by Waterplay Solutions Corp.

Buttercup

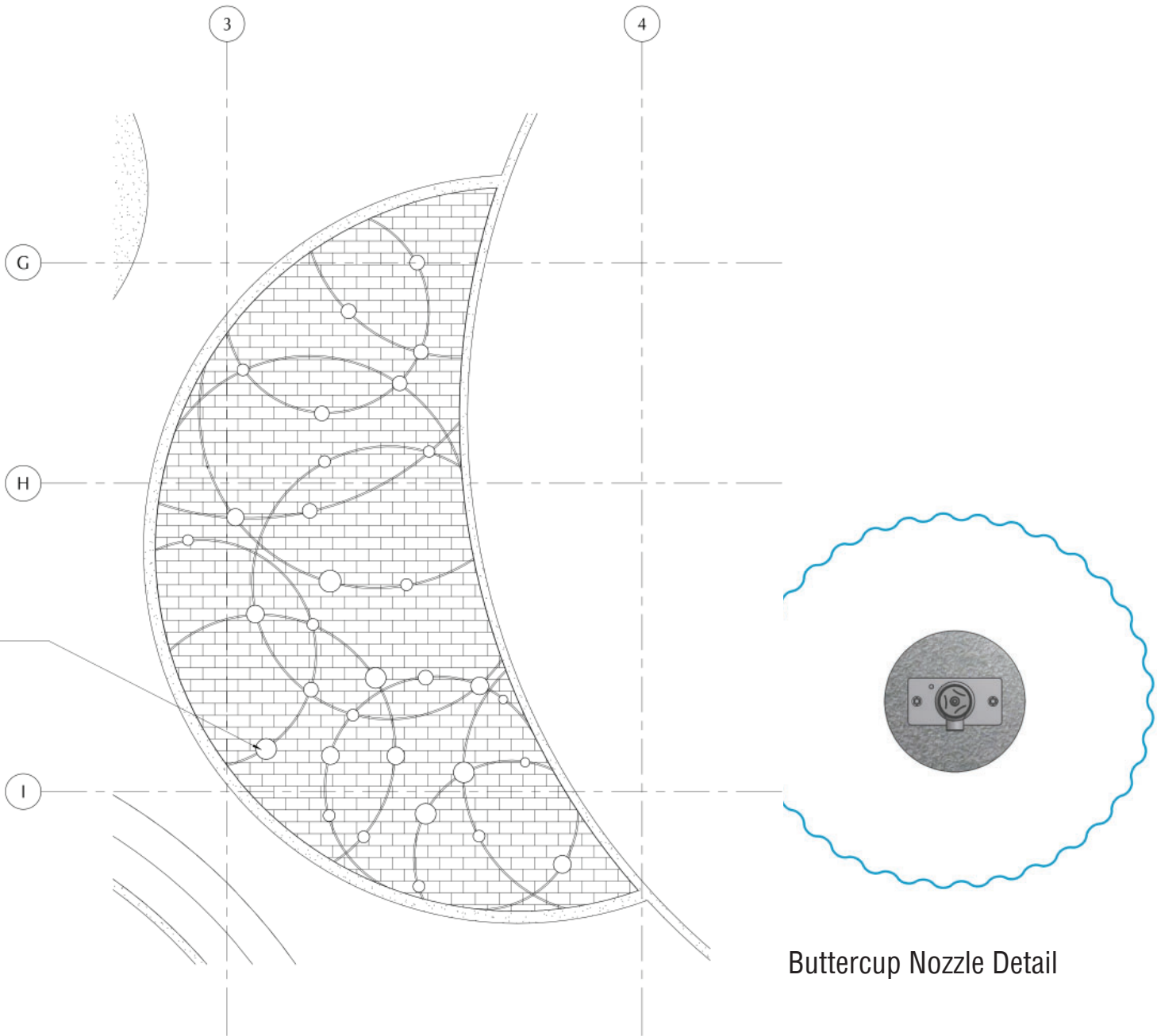
SIZE SPECIFICATIONS		
HEIGHT	SPRAY AREA	
n/a	Ø20'/6096mm	
NOZZLE FLOWS		
GPM/LPM	ENVIRO (LOW)	HIGH
4-7/15-26	●	●
PLAY ZONES		
TODDLER	CHILD	YOUTH
●	●	●

- Three large curved slots angled at 75° create the three curved streams of Buttercup
- Smart construction and design with no pinch points
- Durable acetal ensures longevity and allows for changing out nozzles as desired
- Installed flush to concrete

MORE DETAILS

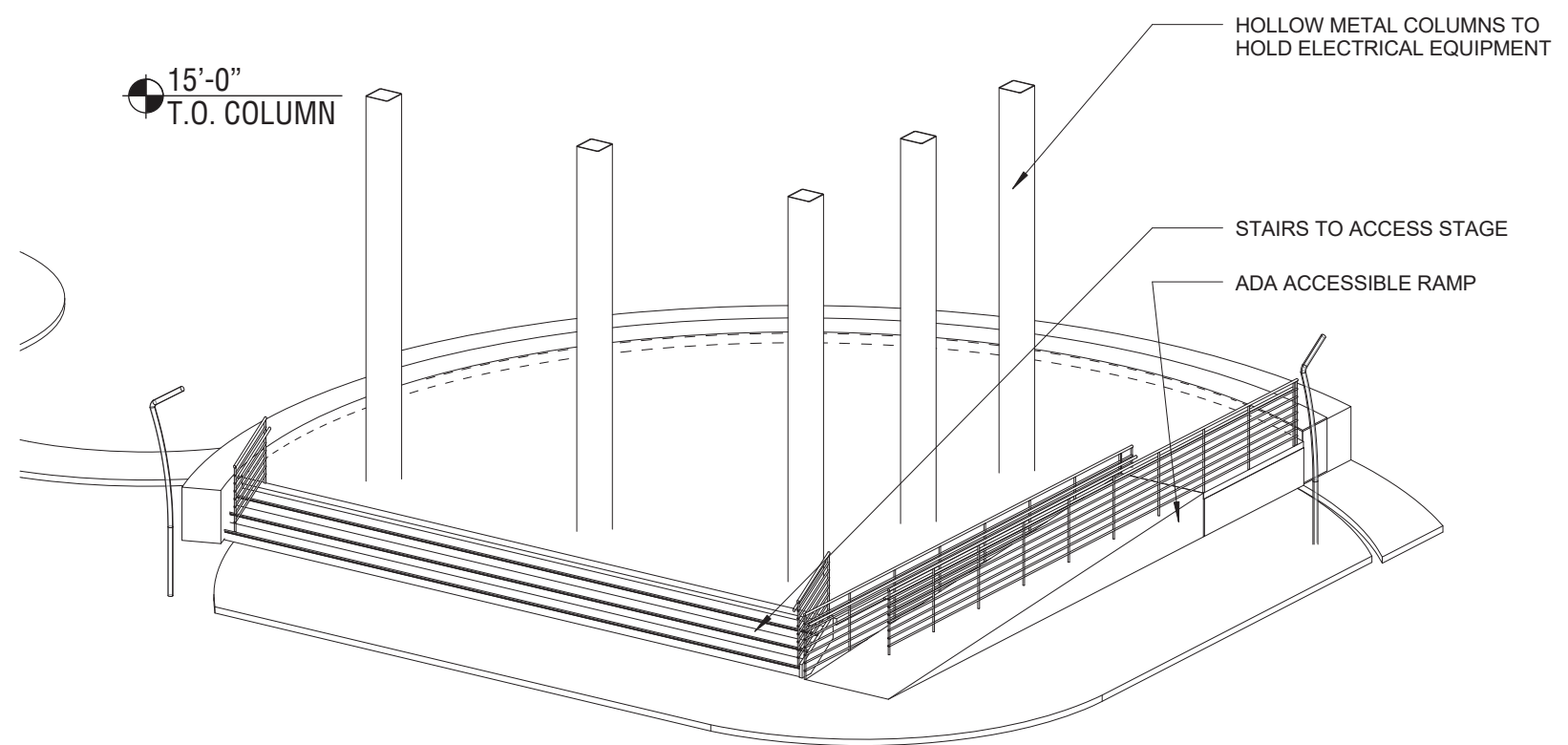
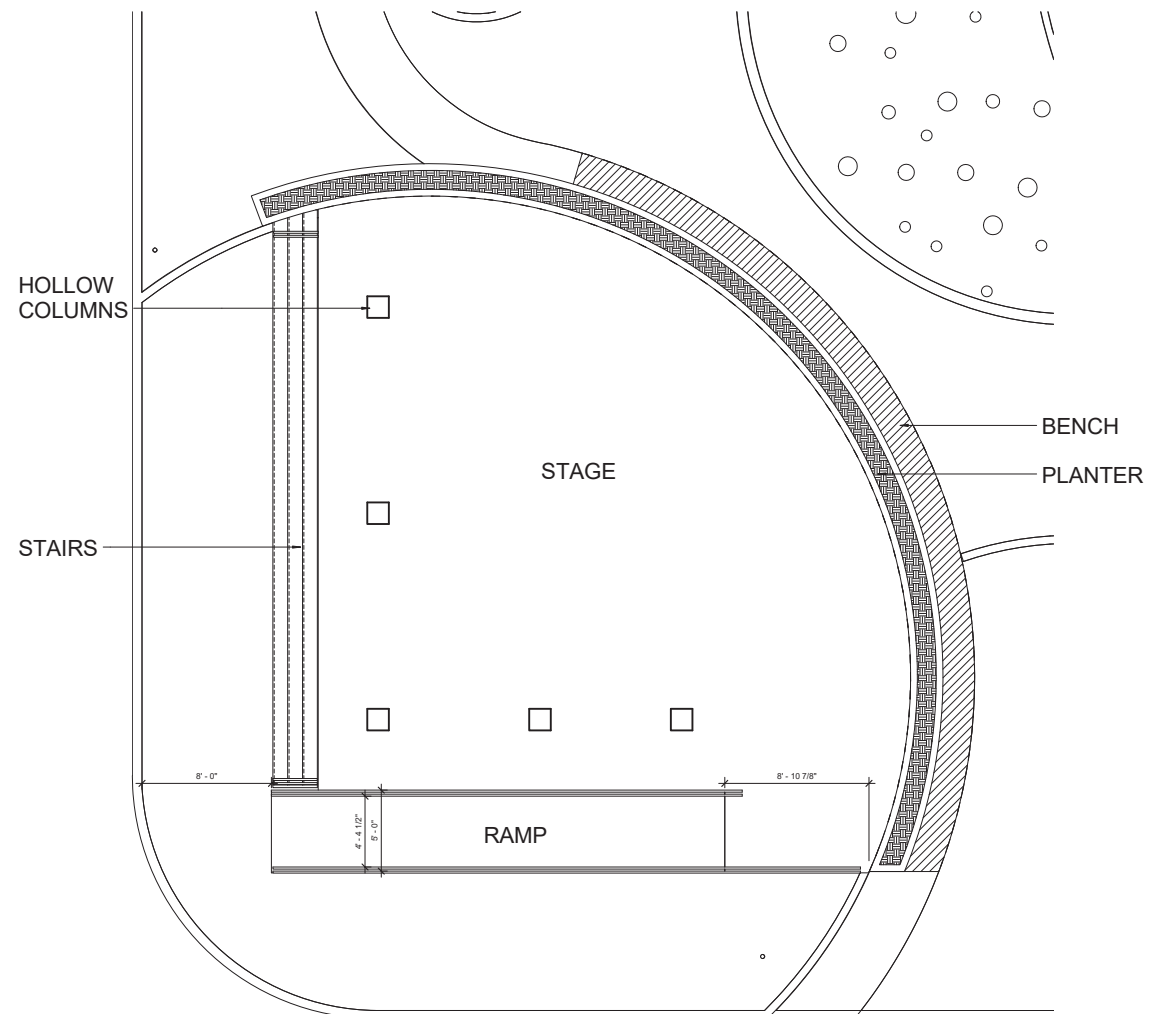
Pipe Diameter	Water Inlet(s)	Spray Nozzle(s)
ø2-7/8" (73 mm)	1 x 1" (25 mm) F-NPT Coupler	1 x 2-1/2" (64 mm)

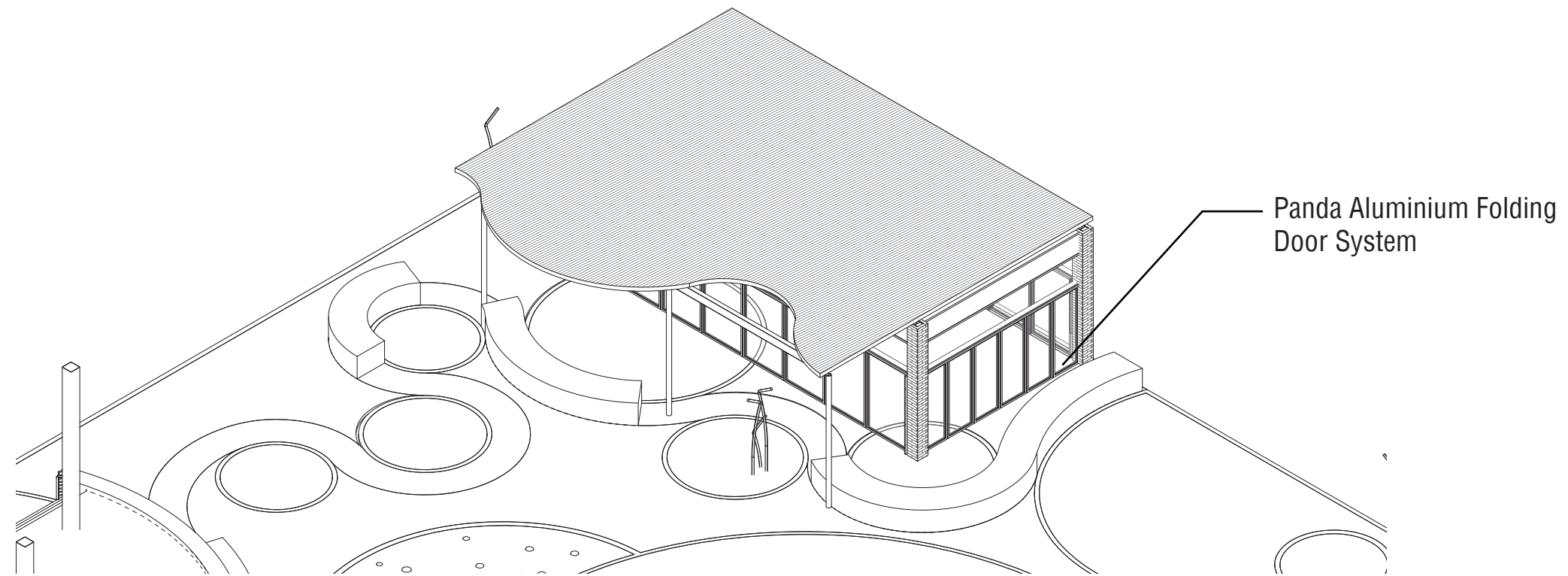
SPRAY NOZZLE ON DISC PROVIDED BY MANUFACTURER



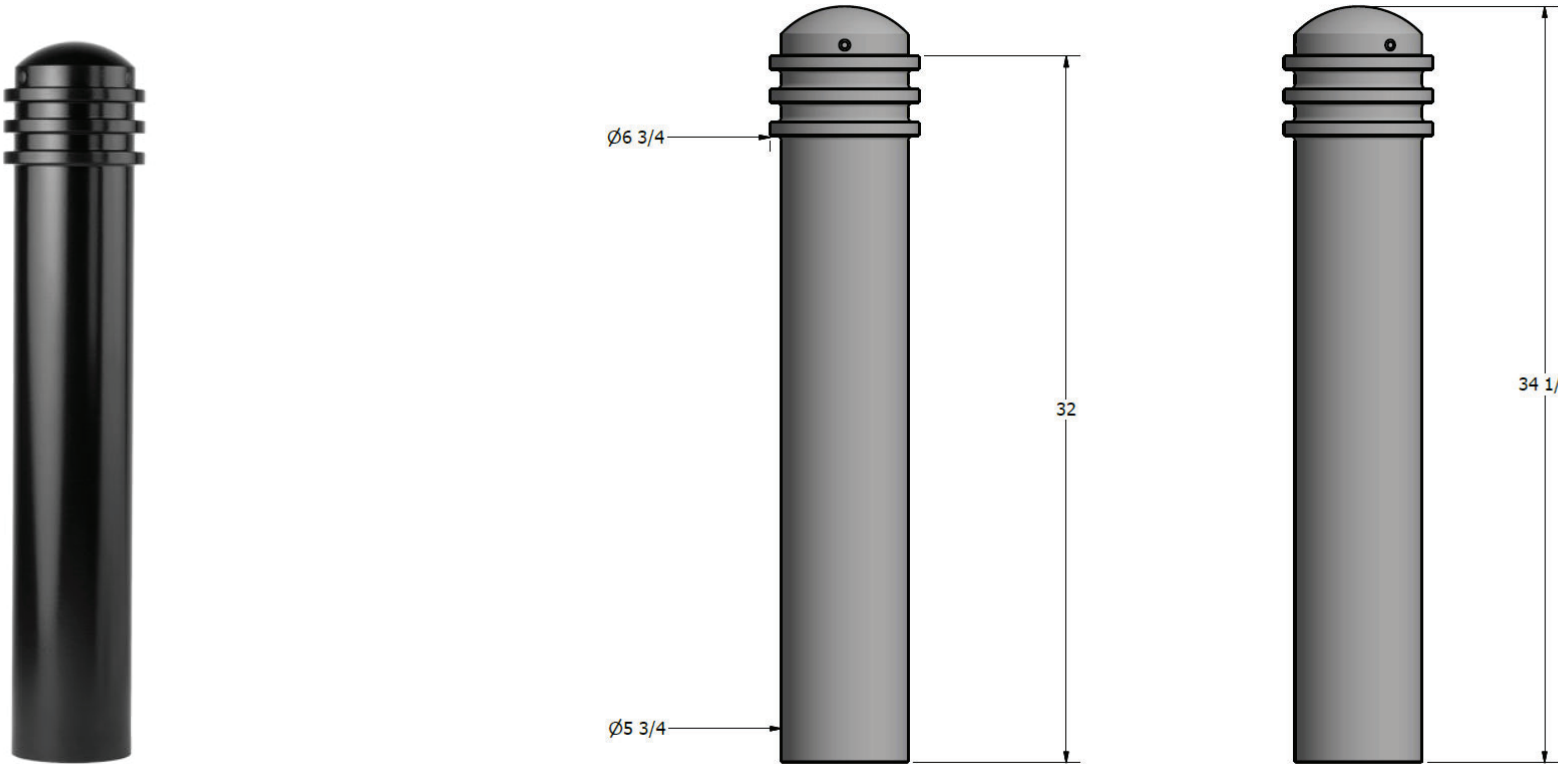
Buttercup Nozzle Detail

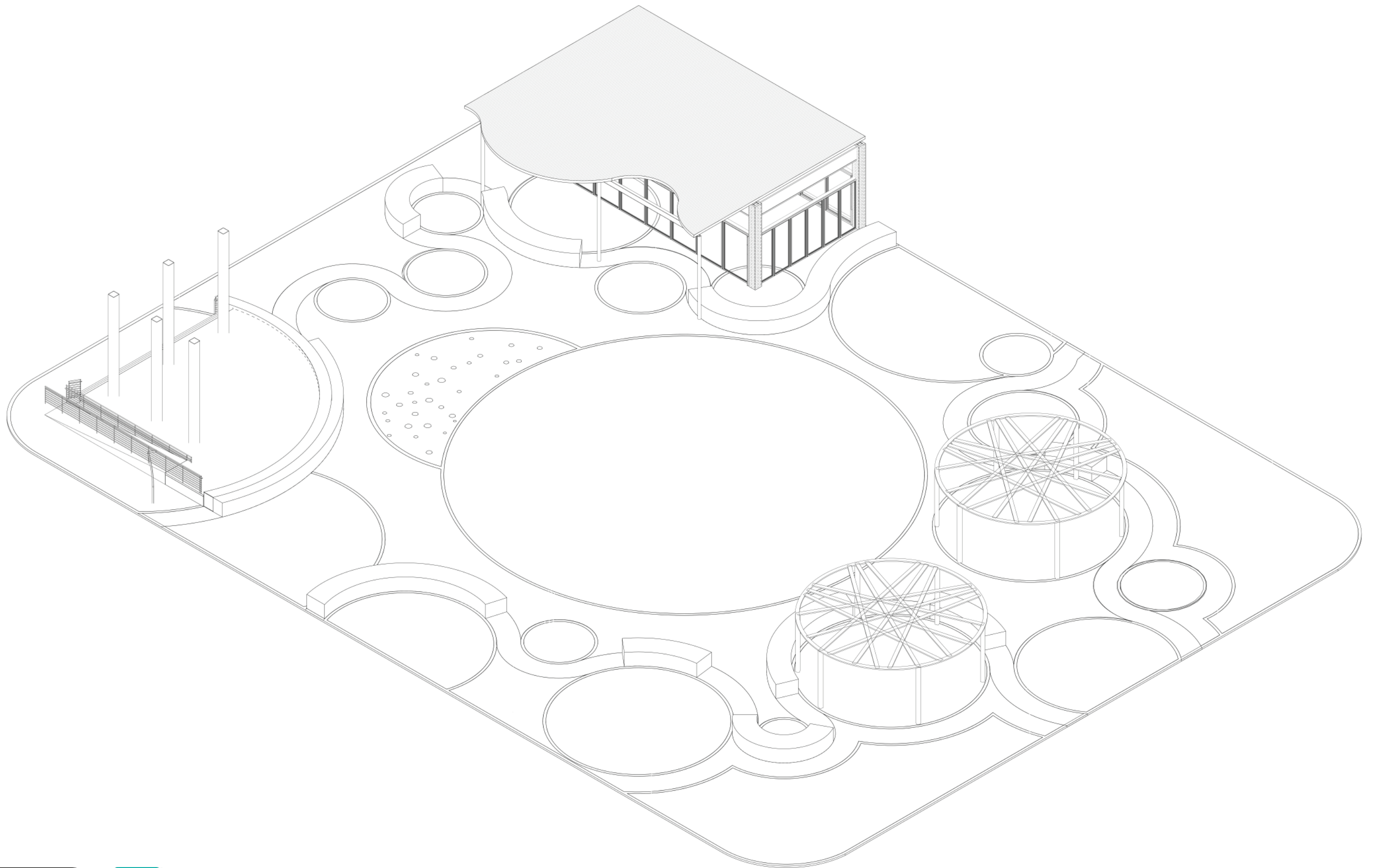


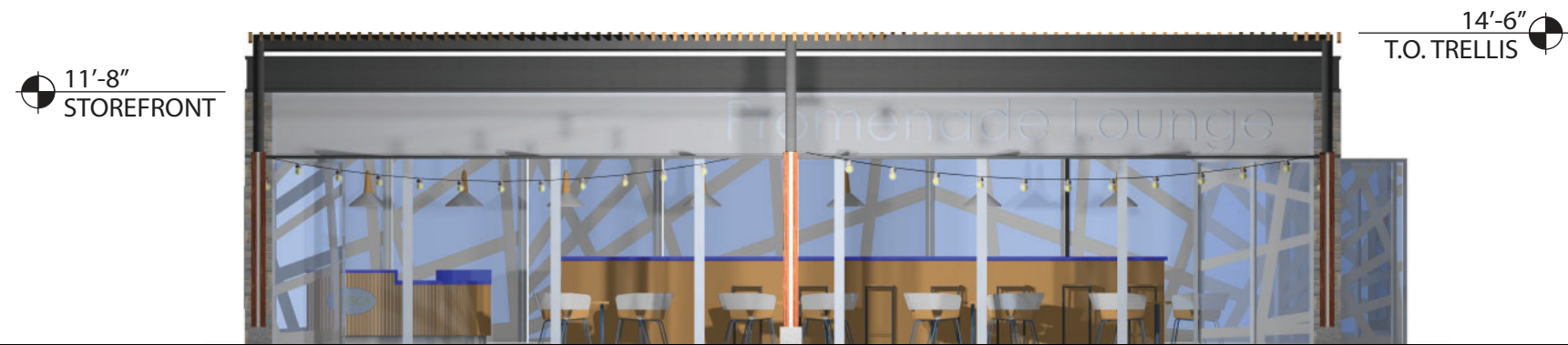




Bollard R-7576 by Reliance F



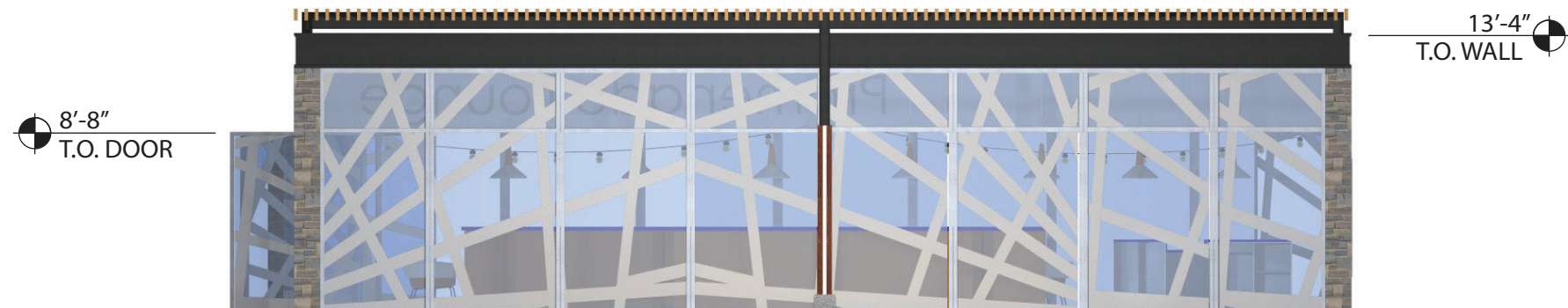




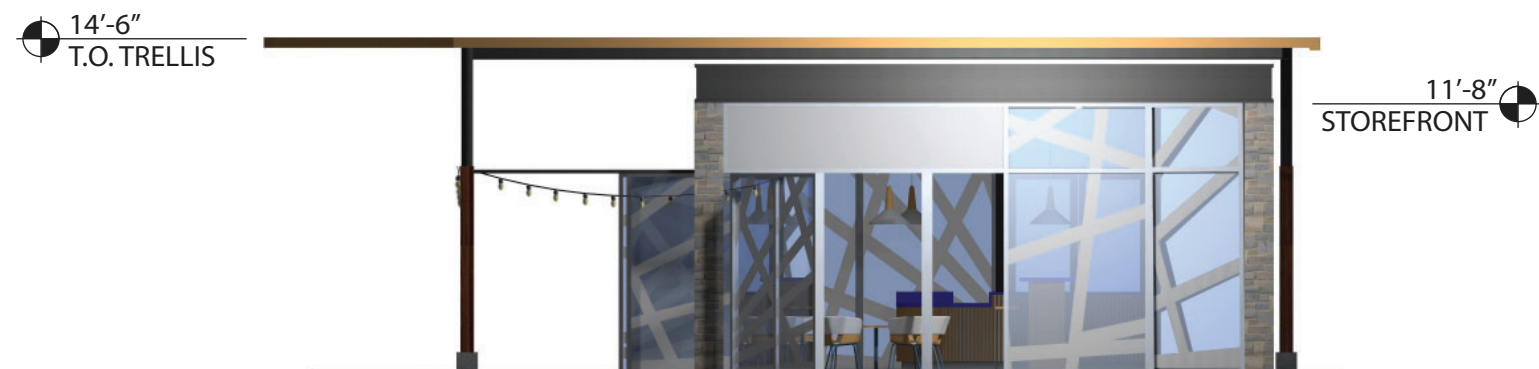
1. FRONT (SOUTH) ELEVATION



2. LEFT (WEST) ELEVATION



3. REAR (NORTH) ELEVATION



4. RIGHT (EAST) ELEVATION

PRODUCT DATA



CSI Code: 03 05 00

No. 783-A

FEBRUARY 2009
(Supersedes July 2007)

PAGE 2 ... DECK-O-GRIP W/B #783-A ... FEBRUARY 2009

DECK-O-GRIP® W/B

Water-Based, Acrylic, Slip-Resistant Concrete Deck Treatment

DESCRIPTION

DECK-O-GRIP W/B is a non-yellowing, water-based, blended, polymer-based, high solids, liquid sealer for decorative concrete. The product is clear, transparent and easy to apply. DECK-O-GRIP W/B also offers greatly improved chemical resistance when compared to standard acrylic-only based curing and sealing compounds. The product has been formulated to seal and protect decorative colored concrete by producing a hard, yet flexible, clear film. The compound contains a slip-resistant additive, which produces a slip-resistant surface, for use on traditionally slippery areas. This product is specifically formulated for the residential decorative concrete market.

USES

DECK-O-GRIP W/B is designed for various applications, including exterior concrete surfaces, driveways, patios, swimming pool areas and exposed aggregate, as well as any exterior surface where protection and sealing of concrete is desired. The use of DECK-O-GRIP W/B on any exterior concrete surface provides a durable, long-lasting finish that has improved resistance to chemicals, oil, grease, deicing salts and abrasion.

PACKAGING

1 Gallon (3.79 Liter) Containers
5 Gallon (18.93 Liter) Pails

COVERAGE*

300-600 ft.²/gal. (7.37-14.73 m²/L)
*Coverage may vary due to porosity and condition of the concrete.

SPECIFICATIONS

- Complies with EPA National AIM, Phase I OTC, and LADCO maximum allowable VOC requirements.

SHELF LIFE (TYPICAL)

One year in original, unopened container.

TECHNICAL INFORMATION

The following results were obtained under laboratory conditions:

Drying Time @ 73° F, 50% RH	2-3 hours**
Re-coat	4-24 hours
Foot Traffic	6-12 hours
Wheel Traffic	24 hours
VOC Content	204 g/L
Adhesion to Concrete	Excellent
Ultraviolet Light (UV) Degradation ASTM C 1315, 8.86, Class A	
Ultraviolet Resistance	Non-Yellowing
Chalk Resistance	No Chalking
Check/Peel Resistance	No Deterioration
Alkali Resistance	Excellent

**Low concrete or air temperatures and/or high relative humidity will extend drying times.

FEATURES/BENEFITS

- Provides a totally clear membrane that will not yellow.
- Seals all concrete surfaces, providing a glossy appearance and easier cleanup.
- Offers excellent slip resistance for slippery surfaces.
- Dustproofs concrete with a tough, durable film.
- Helps minimize spalling of exterior concrete.
- Applies easily.
- May be used on all concrete surfaces, including stamped or stained concrete.
- Provides a clear, tough film, which improves abrasion and stain resistance.
- Offers improved resistance to rain, sun, freezing temperatures, most acids and industrial chemicals, oil, grease, deicing salts, cleaning agents (except aromatic solvents), caustics, airborne soot, dust and other pollutants.
- Seals and enhances the beauty of many concrete surfaces for years.
- Can be recoated after thorough surface cleaning to restore original beauty.
- Dried film is USDA accepted.

LEED INFORMATION

May help contribute to LEED credits:

- EQ Credit 4.2: Low-Emitting Materials: Paints & Coatings
- MR Credit 5.1: Regional Materials: 10% Extracted, Processed & Manufactured Regionally
- MR Credit 5.2: Regional Materials: 20% Extracted, Processed & Manufactured Regionally

APPLICATION

Mixing ... For optimum performance, gentle mixing or agitation is recommended. CAUTION: DO NOT MIX EXCESSIVELY.

Surface Preparation ... Existing Concrete: Concrete surface must be clean and dry with all chemical form agents, stains, oil, grease, dust and dirt removed prior to application. *New Stamped Concrete (At least 72 hours [three days] old):* Surface must be clean and free from all powdered release agent residue. CAUTION: If a liquid compound other than W. R. MEADOWS CS-309™ series or VOCOMP® series products have been used, do not apply DECK-O-GRIP W/B until all traces of the compound have been completely removed and the surface is clean and dry.

Application Method ... MIX THOROUGHLY PRIOR TO USING. A typical commercial sprayer provides an easy, economical method of application.

DECK-O-GRIP W/B should be sprayed with a 5916 nozzle that produces a flow of 1/10 of one gallon per minute. Spray on in a fine, fog pattern, without spurts or dribbles, to form a thin, continuous film. AVOID PUDDLING in low areas. If puddles occur, brush or roll them out. For added protection and a greater sheen on concrete, we recommend two coats of DECK-O-GRIP W/B be applied at right angles. Additional coats may be applied after the first coat has thoroughly dried.

Drying Time ... DECK-O-GRIP W/B dries quickly. Drying times may be extended depending on application rate, temperature, humidity and project conditions. Restrict foot traffic for at least six hours. Twelve hours is preferred.

Cleanup ... While DECK-O-GRIP W/B is still wet, equipment may be cleaned with soap and water. Once dried, the material may be removed with a solvent, such as xylene or toluene.

PRECAUTIONS

KEEP FROM FREEZING. Do not dilute. Do not apply when air, material and surface temperatures are expected to fall below 40° F (4° C) within four hours of completed application. DO NOT MIX WATER-BASED COMPOUNDS WITH ANY COMPOUND CONTAINING SOLVENT.

DECK-O-GRIP W/B is designed for colored concrete, but mottling may occur. Surfaces that have been acid-stained or acid-washed must be neutralized to a pH of seven. Do not use on dense or non-porous surfaces. For other specifications, secure the approval of the paint or resilient flooring manufacturer before applying product. Improper application of a sealer may prevent the film from adhering properly. Poor adhesion and/or entrapped moisture may cause the film to peel and/or turn white (blush). The specifier and user shall determine the suitability and assume all responsibilities therewith.

HEALTH HAZARDS

Direct contact may result in mild irritation. Inhalation may cause irritation of the respiratory tract. Refer to Material Safety Data Sheet for complete health and safety information.

For most current data sheet, further LEED information and MSDS, visit www.deckoseal.com.

LIMITED WARRANTY

“DECK-O-SEAL®, A Division of W. R. MEADOWS, INC., warrants at the time and place we make shipment, our material will be of good quality and will conform with our published specifications in force on the date of acceptance of the order.” Read complete warranty. Copy furnished upon request.

Disclaimer

The information contained herein is included for illustrative purposes only, and to the best of our knowledge, is accurate and reliable. DECK-O-SEAL cannot however under any circumstances make any guarantee of results or assume any obligation or liability in connection with the use of this information. As DECK-O-SEAL has no control over the use to which others may put its product, it is recommended that the products be tested to determine if suitable for specific application and/or our information is valid in a particular circumstance. Responsibility remains with the architect or engineer, contractor and owner for the design, application and proper installation of each product. Specifier and user shall determine the suitability of products for specific application and assume all responsibilities in connection therewith.



CONTINUED ON REVERSE SIDE...

A DIVISION OF W. R. MEADOWS®

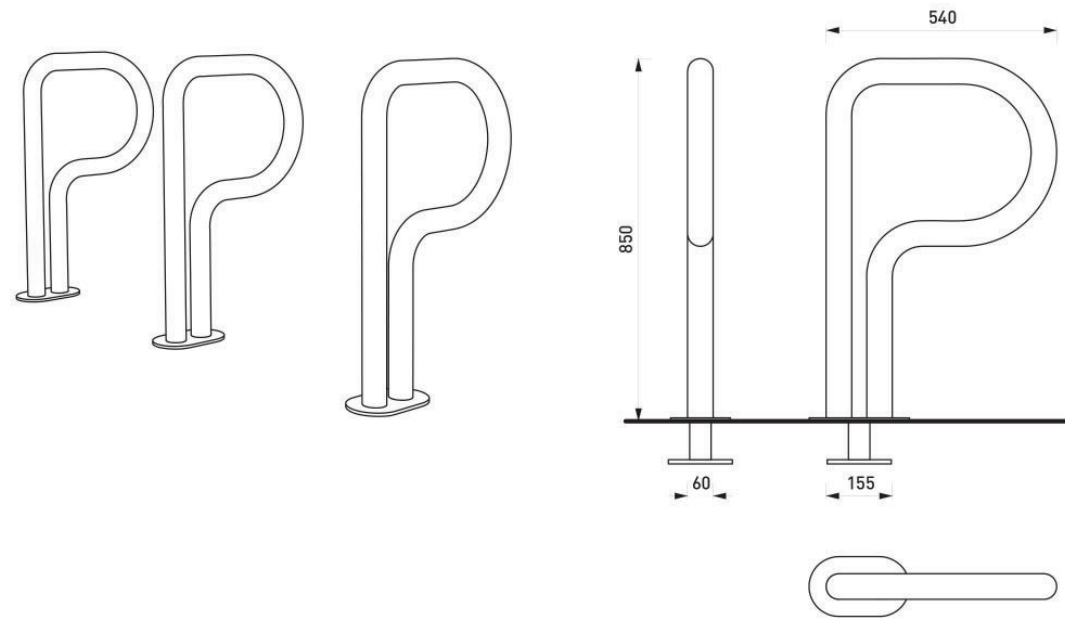
www.deckoseal.com

P.O. BOX 397 • HAMPSHIRE, IL 60140 • PHONE: 800-542-POOL (7665) • FAX: 847-214-2268

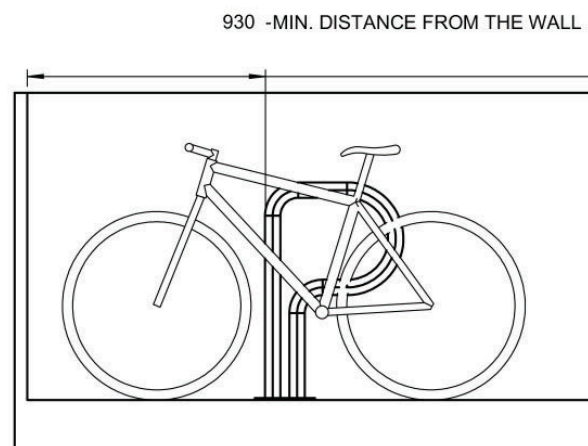
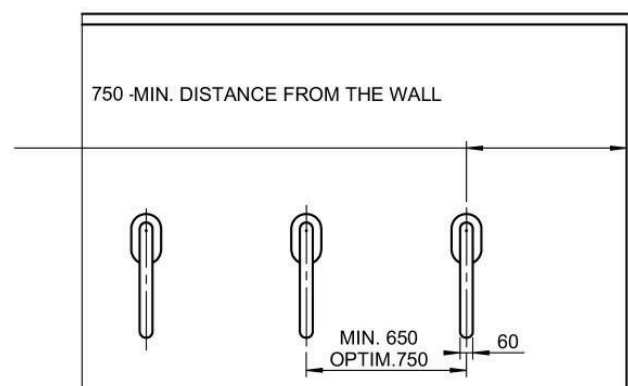


MARCH 26th, 2019

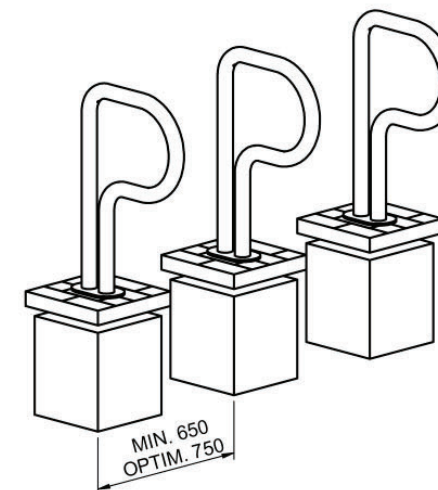
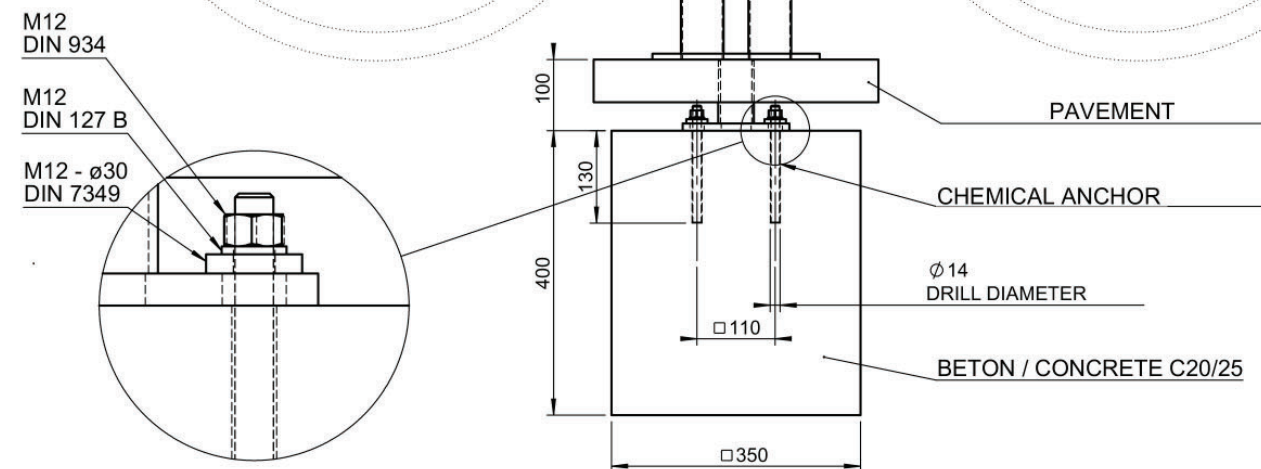
SLIP-RESISTANT SEALER PRODUCT DATA (FOUNTAIN AREA)



ILLUSTRATIVE PHOTO



BPK140



DATE: 3.9.2015 V: 02
dimensions in mm

BPK - BIKEPARK

All rights reserved. Protection of industrial design.



mmcite.com

arlo | one

Davin Larkin

A contemporary range of timeless outdoor furniture for all your needs. From benches to chairs to stools and picnic tables, this diverse range of pieces will complement any outdoor environment.



arlo | one

Materials
304 grade brushed stainless steel
solid timber slats

Variations

